



Schema Examiner Installation Guide

Copyright © 1994-2006 Embarcadero Technologies, Inc.

Embarcadero Technologies, Inc.
100 California Street, 12th Floor
San Francisco, CA 94111 U.S.A.
All rights reserved.

All brands and product names are trademarks or registered trademarks of their respective owners.
This software/documentation contains proprietary information of Embarcadero Technologies, Inc.; it is provided under a license agreement containing restrictions on use and disclosure and is also protected by copyright law. Reverse engineering of the software is prohibited.

If this software/documentation is delivered to a U.S. Government Agency of the Department of Defense, then it is delivered with Restricted Rights and the following legend is applicable:

Restricted Rights Legend Use, duplication, or disclosure by the Government is subject to restrictions as set forth in subparagraph (c)(1)(ii) of DFARS 252.227-7013, Rights in Technical Data and Computer Software (October 1988).

If this software/documentation is delivered to a U.S. Government Agency not within the Department of Defense, then it is delivered with Restricted Rights, as defined in FAR 552.227-14, Rights in Data-General, including Alternate III (June 1987).

Information in this document is subject to change without notice. Revisions may be issued to advise of such changes and additions. Embarcadero Technologies, Inc. does not warrant that this documentation is error-free.

Installation

Welcome to Embarcadero Schema Examiner. This program is designed to run as part of a comprehensive data modeling suite with applications such as ER/Studio.

Technical Requirements

Schema Examiner has the following hardware and operating system requirements. Adhering to these requirements optimizes Schema Examiner 's performance. While it may be possible to run on smaller or older systems, we recommend the following.

Hardware Requirements:

- Pentium III, 700 MHz or higher
- 512 MB of RAM recommended
- 50 MB of hard disk space with the possibility for expansion

Operating System Requirements:

- MS Windows NT, XP, 2000 or later.

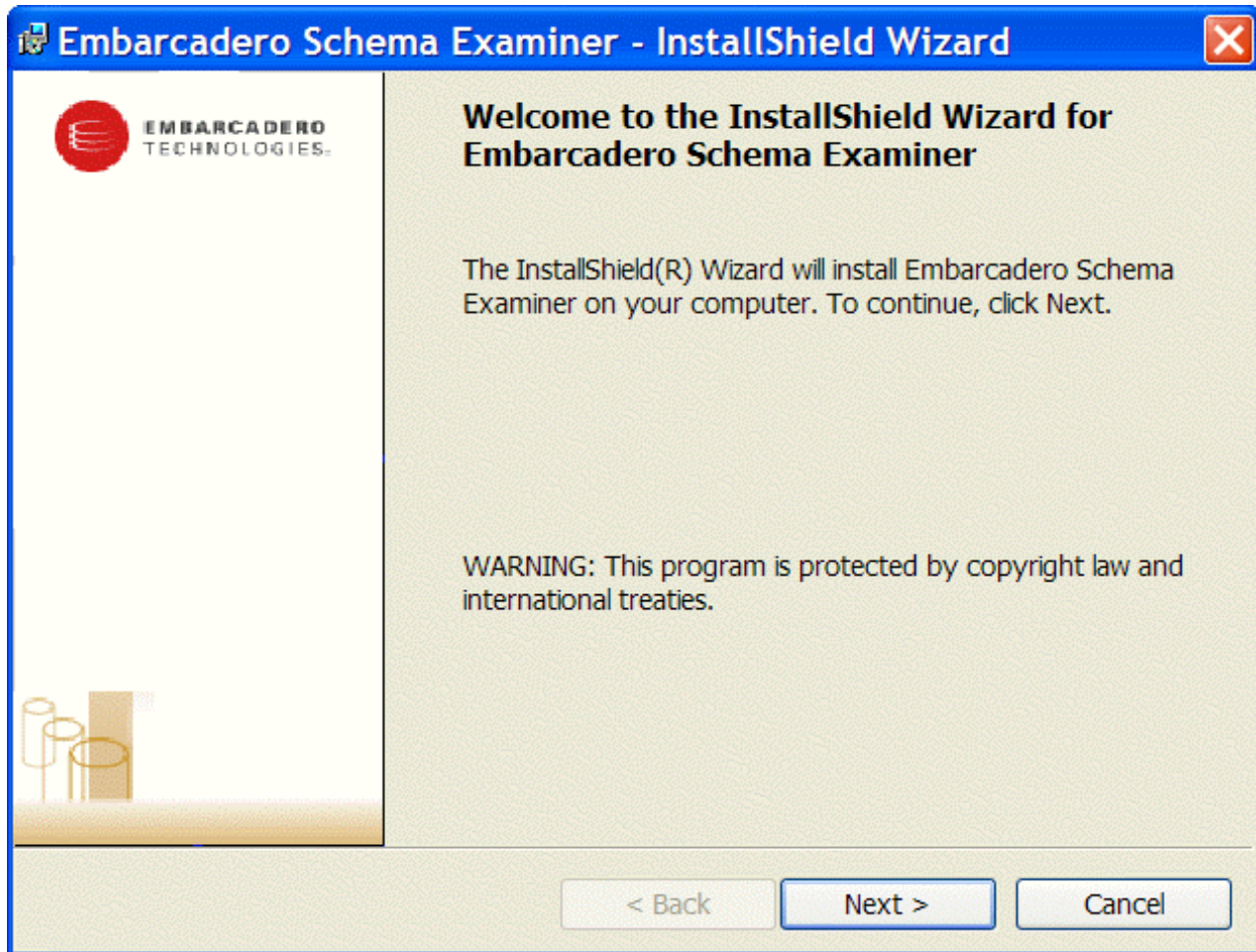
Licensing

You can install Schema Examiner on a single machine with one license.

Installing Schema Examiner

The following section describes the installation procedure (next page).

- NOTE:** Before uninstalling, save the "license.txt" file in the Schema Examiner directory to another folder. The original file will be deleted.



Panel	Description
Welcome to the InstallShield Wizard	Starts the Embarcadero Technologies application installation.
License Agreement	Displays the license agreement. To continue the installation, click Yes. If you click No, the Installation terminates. You cannot proceed with the installation if you do not accept the License Agreement terms. You can print the license agreement from this screen.
Destination Folder	The default directory is: C:\Program Files\Embarcadero\SchemaExaminer7.1\ If you do not want to keep the default directory, click the "Change..." button to choose a file location.
Setup Type	Complete - Installs all files to your hard drive, 33 MB space. Custom - There is no component installation. This option will install the same file set as "Complete."
Ready to Install the Program	Lets you review your installation settings. To start copying the application files, click Next.

Panel	Description
Installing. ..	The progress bar shows extraction process completion.
Installation Complete	Click "Finish."