



# ● Schema Examiner

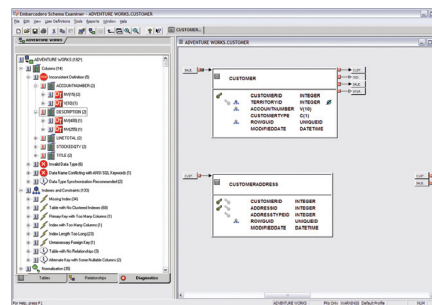
## Spell-check for Database Schema

Embarcadero® Schema Examiner™ automatically reviews and finds design errors in a database schema. Detailed reporting and graphical documentation then simplify the process of pinpointing and reviewing these problems. Finally, Schema Examiner recommends changes to database schema and can automatically generate scripts to fix problems. This efficient and consistent approach to improving database design helps avoid costly data errors and performance problems.

- Simplifies the process of testing and validating database schema
- Allows reverse-engineering of existing schema
- Creates diagnostic reports that increase productivity
- Recommends changes and automatically generates scripts to fix problems

### REDUCES DEVELOPMENT AND MAINTENANCE COSTS

Ensuring that database designs conform to relational standards is often an extensive manual process that requires hours upon hours of review. By automating this process, the analysis goes from hours to minutes. Additionally, Schema Examiner not only finds problems, but recommends solutions, saving time and improving productivity during all phases of the database lifecycle. Whether validating the initial design or evaluating possible changes, improving design quality lowers costs by saving development time and improving database performance.

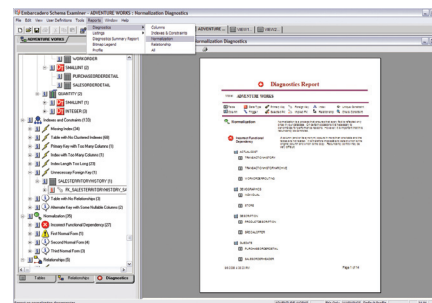


### IMPROVES CONSISTENCY AND QUALITY OF DATA ACROSS THE ENTERPRISE

The quality of the data in your database is of the utmost importance to your business. And maintaining consistency and quality, especially when data is touched by multiple end users is very challenging. By enforcing correct relational design, Schema Examiner helps prevent incorrect and inconsistent data from reaching the database.

### MITIGATES RISK

Business requirements change over time, and naturally this can require changes to the database schema. The length of time required to comprehensively test and validate these changes manually is often just too long. It's all too common for changes to be promoted to production without thorough review. Every change promoted to production compounds the risks of data integrity being lost and of database performance degradation. By automating the process, schema examiner allows validation to become part of the standard change process, significantly reducing deployment risk.



### Related Products

#### ER/Studio®

A model-driven data architecture and database design solution.

#### DBArtisan®

The leading cross-platform database administration solution. Helps DBAs maximize availability, performance, and security.

#### Rapid SQL®

An integrated cross-platform database development environment with comprehensive tools for tuning and editing code.

### Solution Pack - Examiner Edition

Schema Examiner and ER/Studio form a complete solution for database design and schema validation.

Feature	Description
<b>Comprehensive Diagnostics and Reporting</b>	
Schema Analysis	Analyzes the schema's data structure, keys, indexes, field columns and relationships
Flaw Detection	Applies the rules of the relational model and detect flaws and inconsistencies
Customizable Diagnostics	Diagnostics can be specified to isolate only key metrics, then conveniently grouped based on category or severity
Intuitive Reporting	Graphical documentation of the entire database structure, including column cross-reference and relationship listings is provided in an easily read and responded to format
<b>Design Discrepancy Isolation</b>	
Isolate Design Issues	Innovative "Show Me" facility isolates specific design issues in complex database models, saving hours of time sifting through thousands of lines of code
Intuitive Display	Design issues found are displayed in a simplified window that drills down only on the affected portion of the structure
Model Division	Modelers can specify which subsets of the model to deal with at a given time, allowing validation work to be done in manageable chunks
<b>Database Relational Model Analysis</b>	
Error Discovery	Quickly identifies structural errors allowing them to be easily fixed before they flow through the entire design
Design Validation	Validates design elements against industry standards to ensure consistent design quality across the entire database
Change Recommendation	Diagnostics not only evaluate current quality, but also provide recommendations for improvement, including automatically generating scripts to execute design changes
<b>Flexible Analysis Interface</b>	
Database Reverse Engineering	Reverse engineers database schema from existing databases for analysis
SQL Script Interface	Performs analysis on database schema based on SQL Scripts
ER/Studio Model Interface	Directly interfaces with ER/Studio allowing schema analysis, validation and recommendations while designing the database in ER/Studio
<b>Change Validation</b>	
Maintenance Management	Schema Examiner allows users to check and validate alterations to a database design as a result of maintenance or new inclusions to the database structures. Users can simulate design changes before implementing them.
Performance Management	Schema Examiner identifies violations of best practices that adversely affect performance. Suggested changes are scripted for easy implementation.
Instructive Recommendation	In addition to providing specific diagnostic and recommendations, Schema Examiner explains the theory behind the messages. This valuable "Teach Me" facility reveals the impact of design choices or modifications in light of Relational Theory.
<b>Cross-platform Support</b>	
Multi-platform Interface	All database platforms are accessed from the same easy to use interface
Cross-platform Compare	Compare database schemas from different database platforms with each other to highlight similarities and variations
<b>'Teach Me' Facility</b>	
Flaw Impact Analysis	Reveals the impact of design choices or modifications in light of relational theory by explaining the relational theory that the flaw violates

System Requirements		DBMS Support
<b>Operating System</b>	<b>Memory</b>	IBM® DB2® Mainframe versions 4, 5, 6, 7 and 8 IBM DB2 Client/Server versions 4, 5, 6 and 7 Microsoft® SQL Server 6.5, 7, 2000 and 2005 Oracle® 7, 8i, 9i and 10g Sybase® 10, 11 and 12.x Schema Examiner also supports any ODBC compliant datasource.
Microsoft Windows® 98, ME, XP Home	256 MB	
Microsoft Windows NT®, 2000, 2003 and XP Professional	512 MB	

Download a Free Trial at [www.embarcadero.com](http://www.embarcadero.com)

Corporate Headquarters | Embarcadero Technologies | 100 California Street, 12th Floor | San Francisco, CA 94111 [www.embarcadero.com](http://www.embarcadero.com) | [sales@embarcadero.com](mailto:sales@embarcadero.com)