

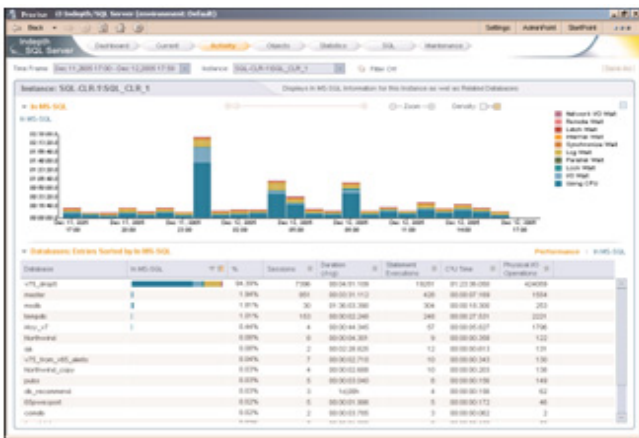
Precise™ for Microsoft® SQL Server

Performance Management for Microsoft SQL Server environments

Precise for Microsoft SQL Server gives your business the application performance management it needs to proactively monitor, analyze, and tune SQL Server databases.

To ensure that your applications perform at peak efficiency, Precise for Microsoft SQL Server captures, measures, and correlates performance metrics from all critical system components. It helps you detect and correct the root cause of database degradation before end users are affected, while maximizing the return on your technology investments.

To help tie performance problems to business impact, Precise for Microsoft SQL Server provides a breakdown of the transaction response time in the SQL database. Performance alerts and reports are then available for both the business and technical user to accelerate problem resolution efforts.



Precise for Microsoft SQL Server provides DBAs with current and historical information that can identify database performance bottlenecks

Benefits

- Monitor and tune application performance continuously, comprehensively, and proactively.
- Correlate performance metrics across multiple database instances.
- Use the dashboard to easily view statistical and current database activities.
- Work with custom-developed, ERP (SAP, PeopleSoft, Siebel), and e-business environments.
- Drill down to individual SQL statements and the underlying storage device.
- Break performance data into narrow time slices.
- Identify the causes of locking and blocking issues in the database.
- Take advantage of an "SQL Workspace" for SQL and database object tuning.

Increase productivity with continuous monitoring

Precise monitors your SQL Server environment continuously, capturing performance data for current, short-term, and long-term performance analysis. To investigate a bottleneck (such as a locked session or a runaway process), you can view an up-to-the second snapshot of database activity. Or, to review the performance data of a recent activity, you can use a historical view to answer questions such as, "What caused a slowdown in the system yesterday between 10:00 p.m. and 11:00 p.m.?"

Identify performance shortfall cause and effect

Once Precise for Microsoft SQL Server detects a performance problem, a user can drill down to pinpoint the problem's cause. Typical causes are a poorly designed SQL statement, program, or database object, or a bottleneck due to a resource

Precise™ for Microsoft® SQL Server

Performance Management for Microsoft SQL Server environments

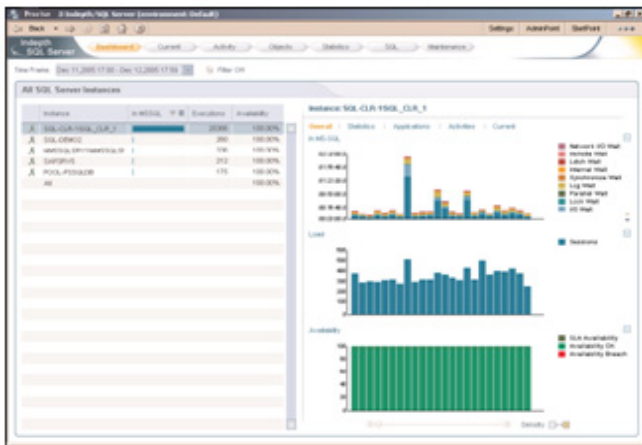
shortage in the operating system or database. Precise displays detailed performance information in easy-to-understand graphics, so you can quickly identify your most serious problem areas.

Instance level

Using Precise, you can see which instance-level resources are causing performance problems. For example, you can drill down to see whether the root cause is excessive CPU or I/O resources, flawed database design (which creates locking problems), or internal SQL Server problems (which cause waits in resources such as latches and data buffers).

Resource consumer level

To determine which resource consumers are responsible for your performance problem, Precise for Microsoft SQL Server drills down another level to identify which entities (database users, programs, client machines, and so on) were consuming resources during a specified unit of time.



Precise for Microsoft SQL Server displays resource consumption by statements, databases, users, programs, and more.

SQL statement level

Precise probes even further to identify SQL statements and batches that are causing problems.

This includes SQL statements that consume the largest amounts of resources, long-running SQL statements, and short but frequently executed SQL statements.

SQL statement resource level

For each SQL statement or batch, Precise for Microsoft SQL Server shows the resources that are causing waits. For example, you can determine whether an SQL statement is CPU- or I/O-bound, or whether it is affected by the excessive resource use of another SQL statement. Once it has identified a problem, the program can use its robust analysis utilities to focus on SQL statements and database objects that are causing problems.

Analyze problems

Using Precise for Microsoft SQL Server, you can quickly analyze SQL statements, database objects, and SQL Server instances to uncover the specific causes of performance problems.

SQL statement analysis

Precise presents the SQL Server access path in detailed steps, and displays the statistics needed to understand each step.

Database object analysis

For each database object, Precise for Microsoft SQL Server shows the statements that access the object. For example, you can find all SQL statements that perform full table scans on all tables with more than a million rows, or you can identify the indexes that are scanned in full index scans. You can even identify unused indexes. Having the ability to analyze SQL statements and database objects allows you to determine whether your performance problems are caused by poorly written SQL statements or inefficient object design.

Precise™ for Microsoft® SQL Server

Performance Management for Microsoft SQL Server environments

Instance statistics for analysis

Precise for Microsoft SQL Server continuously collects instance and database statistics from the Windows® Performance Monitor command, and saves them in the Performance Warehouse. This enables you to correlate application performance metrics with instance and database performance metrics, then analyze them to help solve problems.

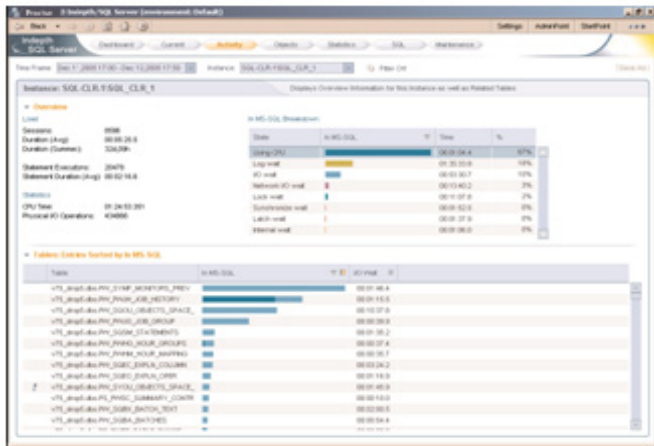


Figure 1 Indepth for SQL Server lets you identify poorly performing database objects.

Improve performance

Once you have analyzed your performance problems, you can fix them. Inefficient SQL statements and poorly designed database structures are the leading causes of performance problems in SQL Server environments. Precise features built-in utilities to tune these components and improve performance.

Change SQL statements

To solve common SQL shortfalls, you can store SQL statements in a logical cabinet and folder hierarchy. You can populate it with statements appearing in the Current Activity and Recent Activity workspaces, or with manually written statements. Then you can examine stored statements to locate ones that meet

your current requirements. You can also modify a statement and assess the impact of your modifications on the statement's access plan.

Step-by-step performance management

The easy-to-use, comprehensive approach of Precise for Microsoft SQL Server guides you through performance management from start to finish—from proactive monitoring and problem detection to problem identification, analysis, resolution, and verification.

System requirements

Consult <http://www.precise.com/support> for detailed application server and operating system version support information.

Database

Microsoft SQL Server 2000 SP3, 2005

Server operating systems

Windows 2000

Window Server 2003

Client PC specifications

At least 32 MB of memory and 16-bit color, SVGA

CPU speed of 300MHz or higher

Microsoft Windows 95, 98, or 2000 SP4+

Microsoft Internet Explorer 5.0 or higher (to view the online help)

Adobe Acrobat Reader 3.0 or higher (to view the documentation)

Precise™ for Microsoft® SQL Server

Performance Management for Microsoft SQL Server environments

About Precise Software Solutions

Commitment, Focus, Experience

For over 15 years Precise Software Solutions has helped our Global 2000 customers manage business performance in complex, heterogeneous environments, assuring availability and business continuity. Precise offers a complete solution – from discovery through ongoing management – that allows our customers to focus on their core business. We offer the broadest platform support, in terms of enterprise application, operating system, database, and development environment coverage. Precise is the solution of choice for IT as an organization-wide standard for application management.

Visit our Web site

www.precise.com

To speak with a Product Specialist in the U.S.

Call toll-free 1 (877) 845 1886. For specific country offices and contact numbers, please visit our Web site.